

# L'hiver Mode

Words by Rhiannon Bulley

## Little Surprises Wrapped in Rainbow Magic



WINTER BLUES ARE ACCOMPANIED BY BRIGHTER HUES; THE DARKNESS IS DEFEATED BY COLOUR. THERE IS A POT OF GOLD AT THE END OF EVERY WINTER RAINBOW AND A BUOYANT TRIBE OF NYMPH LIKE CREATURES BATHING IN ITS REFLECTIONS DOWN BELOW.

The weather is getting colder but the wardrobe is getting hotter. Exuberant layers of texture and dramatic gestures of style make a graceful entrance into the winter wonderland. Everything is getting bigger and no one is shrinking back into the darkness. Whether you choose to combat the cold with colour or slink into its shadow swathed in saucy sophistication, it doesn't matter as long as it's your heart you're wearing on the sleeve.

The icy air reeks with mystery sending shivers of desire from the top of the spine to the tip of the toe. Mrs. Press little black dresses with puffy sleeves and tulle skirts make doe eyes at strangers across the room and smoking leggings with elusive hints of silk and lace on top fill the room with a sensational heat.

Meanwhile Kirrily Johnston's draped layered knits and Natalie Chapman's slinky silk numbers offer alternate choices for winter style. Think never shabby always chic or skin-tight sportive seductress. Which girl are you? There is no right answer. Winter is about a statement of mind not simply a state of being.

Winter fashion brings shrieks of delight to the lips of the ladies who love to layer. It's time to dig the socks, stockings, gloves, scarves, boots, drapery knits and sumptuous coats out from the back of your wardrobe and team them with those slinky silks and sheers of summer. Layering is like a children's game of dress up's in a puzzle book, can't go over it, must go under it, can't see under it, must go on top of it, can't get under it, must wrap round it. And the secret to solving the puzzle this winter is too much is just enough.

Co-ordinate your outfit the way you would the interior of your home, one dominant colour, one bold pattern and all those little ornaments to frame. Adjoining rooms should graduate not jump and linking features should thread the whole picture together.

This winter that picture is set to be a colourful one. The preordained perceptions of winter style have been shifted by a rambunctious band of fearless femmes.

Winter, contrary to the previously popular opinion, is not the time to farewell the colourful sunsets and welcome in the stark grey sky's it's the time to paint a rainbow of your own. The colour comes from within and exudes the warmth of childlike chic into the skies and onto the streets. The trick to this trend is to cast aside those mature values of what matches and what doesn't and revert back to your childhood days where a blank canvas should be covered in colours no matter what they are. Black is an outline not a solid block and white is a blender not a standalone force.

Your mind's eye knows what works and your feminine instinct knows how to put it together so be fearless in your colourful creations. Scribble your orange on top of your pink, replace your grey with pastel pinks, minimise your black and maximise your favourite shade of blue, purple or yellow.

Spin the colour wheel and see where it lands. Surprise, after all is the emotion that never fails to measure reaction, shock, delight, envy and love. So it goes without saying that the answer to the riddle of what makes something stylish is the little surprise you leave for your audience within every concoction. A hint of lace, a mis-matching sock, or a slice of what is usually considered nightwear during the day. Add a bold texture on top of a striking pattern, an object turned accessory, a scarf turned legwarmer or a stray item of clothing peeping out from underneath what is excepted as the usual "classic" look.

Team sophisticated with statement, elegant with androgynous, stark with bold, sleek monotone with chunky knit, denim and leather with big jewels and sequins. The choices are endless and the power is yours so follow your instincts, layer your personality and flaunt your character. Every great tumultuous, fantastical journey reveals new possibilities and within each possibility there is an element of surprise. This winter 'She' is that surprise, waiting around every bend of the journey that is the eternal pursuit of style.

Words by Rhiannon Bulley

# Embellish This

EMBELLISHMENT CAN BE DESCRIBED AS THE ART OF ENHANCING OR ADDING ONTO BUT EMBELLISHMENT SHOULD BE DESCRIBED AS THE DETAIL, THE ELEMENT THAT TAKES THE ORDINARY AND MAKES IT TRULY EXTRAORDINARY. THIS IS A DEFINITION THAT SWAROVSKI HAS RECOGNISED AND DEFINED IN ITSELF.

For over ten years Swarovski's Crystallized collaboration has allowed designers from the late Alexander McQueen to the young gun Christopher Kane to take the art of embellishment to the next level. Thousands of little scintillating rocks in limitless shades and shapes have turned a dress into a gown and an every day outfit into an eye popping, traffic stopping extravaganza.

Every season the runways are augmented by Swarovski's dazzling embellishment from New York to Paris, no stone is left unturned. Their materials are a playground of texture armed with that integral finalizing sparkle to complete.

This AW10 was no different renowned designers including Erdem, Holly Fulton, Matthew Williamson and Hussein Chalayan joined Giles Deacon, the Crystallized veteran of thirteen seasons and Peter Pilotto the baby face debut in taking the precious elements of the earth and turning them into fashion fantasy realized.

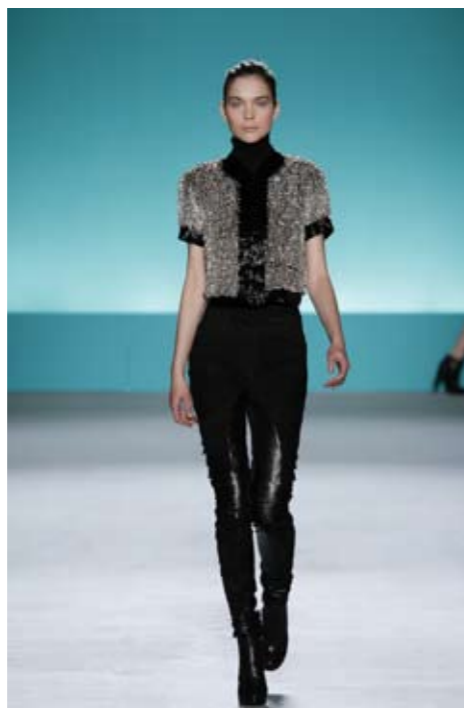
Visions were materialized and colours and texture were given a new splendid life at every show.

Matthew Williamson used thirteen thousand clear crystal studs and irregular shaped metallic light blue stones to guarantee his second Crystallized season was far from second best. Stones were stitched everywhere from boleros to fringed jackets ensuring his matador woman was nothing short of a modern heroine, who was fearless in her pursuit of fashion glory. Pleated organza and crystals created malleable morning to night superwoman turned star style. Matthew sited the winner of the matador games as the fringed jacket decorated with ten thousand crystals that turned daywear into the ultimate eveningwear statement.

Meanwhile Holly Fulton was using one hundred and twenty thousand rocks, yes that's right it was no lean feat, to ensure her signature love of

the trompel'oeil was truly spectacular. She used crystals as not only a rock solid form but also as a reflective print. Her fascination with glass blowers and the explosive colours of their progressive work lead her to literally incorporate the qualities of glass into her garments and what better way to do it than to use Swarovski's very own glaze like stones to create a seamless collection of inspiration mirroring texture. Crystal and Holly Fulton's design aesthetic have gone hand in hand for three seasons, "I love to utilize the interior crystal ranges to fit in with my motto when it comes to embellishment of the bigger the better!" Indeed her designs were bigger and with Swarovski on her side they can only get better.

From the truly artistic, to the lifestyle performance motivations of Hussein Chalayan's evolutionary collection, the role of crystal is indefinable. Hussien Chalayan's creations allowed style and sentiment to speak in one unanimous voice. His AW10 collection was an all-encompassing journey inspired by a trip across America, but with over a half a million stones there was no destination in site just a transformatery closet with boundless characters hiding inside. Hussein Chaylan took us on a journey through the endless possibilities



Matthew Williamson



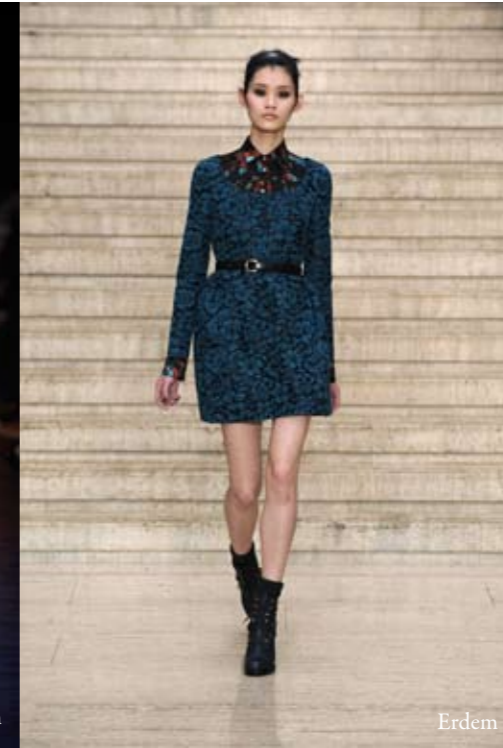
Holley Fulton

Le Fashion

Le Fashion



Hussein Chalayan



Erdem



Peter Pilotto

of a woman's wardrobe that are refined only by time, place, circumstance and most importantly personality and desire.

Swarovski's runway influence did not end there though. Erdem, Giles Deacon and Peter Pillioto all had their own poignant visions, which would be incomplete without a touch or an avalanche of crystal to cement them.

A quarter of million angular pendants became an armor of hardened outerwear. The stand out piece was a dress of graduating rainbow tanzanite, light amethyst, jet hematite and fuschia stones that took over three hundred hours to create and will stand as permanent and powerful in time as the rocks it is made up of.

Crystallized has once again crystallized every one of fashion's inspirations in it's own individual way. The

## Embellishment is an extension, an extension of ones self through one's style

London based designer Erdem used crystal to ensure his watershed visions of beauty remained exactly that in spite of season or time. In his eighth season of collaboration Erdem turned crystals into a wondrous vision of bejeweled juxtaposition. Crystal adorned cashmeres and organza's collided into a united apparition of the purely pragmatic and the serenely surreal. Mosaic stone arrangements turned garments into tangible artworks with a visual texture and vibrant pattern of tone. Designer, Erdem Moralioglu summed it up as, "It is a wonderful collaboration and really exciting. The Swarovski components really added a rich, jewel like feeling."

Peter Pillotto used his crystals to make the classical fantastical. Traditional fabrics such as Harris Tweed and Liberty Prints were invigorated with crystals and contrasted with gunmetal chains of stimulating stone. In his debut season Peter Pilloto made Swarovski's prize stones the transformative element that turned the conventional into a contemporary style catalyst.

No season of Crystallized has ever been complete though without the imagination of Giles Deacon who has never failed to turn stone into water, so to speak.

sky is the limit for these metamorphic stones. These designers use of Swarovski serves as the perfect definition to embellishment, it is not something that can be described because it is description. It is that finishing flourish that makes an outfit both indescribable and worth describing. It is the little descriptive note you add to your silhouette to make sure it is unforgettable. Embellishment is an extension, an extension of ones self through one's style so don't stay in stand out this winter. Embellish and extend and excel that is what fashion is about.



Giles Deacon

# Rebecca Dent

WORDS BY RHIANNON BULLEY

SYDNEY BASED ARTIST, REBECCA DENT SHARES HER INSPIRATION AND HER ARTWORK WITH US IN AN EXCLUSIVE INTERVIEW AND EDITORIAL COLLABORATION WITH ANOTHER INSPIRED AND ENERGISED CREATIVE BEING, LE BLACK BOOK'S, CLARE PRESS, OF MRS. PRESS.



Sitting on Rebecca's deck sipping tea on one of the hottest days of Sydney's summer is like drinking a cup of refreshing, inspired beauty, with a twist of grounding wisdom. Hours pass by as we discuss everything from life, to love and heartbreak and their place in art. For Rebecca, "art is more than a hobby, it's a passion, an entire language." The intense heat is barely noticeable amongst Rebecca's overwhelming warmth and the penetrating rays of the sun are lost amongst the hypnotising reflections of her colourful artwork.

Rebecca Dent's Victorian French style studio home is a world of vivid colours and imagery. Situated above Sydney's buzzing Oxford St. precinct, she is right between the beach and the city and right at the creative heartbeat of Sydney. Environment has always been a great source of inspiration for Rebecca and with all this at her fingertips she is never short of stimulation. Her days are made up of movies at the Chauvel, coffee's at Perry Lane and strolls along the famous Bondi to Bronte beach walk, where the natural beauty of the landscape never fails to stir something within her.

Rebecca has a full approach to life, nothing is ordinary in her creative eyes. Life is her greatest inspiration, from places to people to nature and colours. The world is an ever-changing spectrum of beauty transcribed onto colourful canvases, with paint, photography, assemblage and illustration, there is no visual medium she hasn't explored.

Her latest solo show, Fragility, at Paddington's Global Gallery, was a myriad of technique, texture and subject matter, from her portraits to her landscapes. The fragility of human and environmental nature hung from every wall, yet the impact was not daunting, it was uplifting. Rebecca's imagery reflected the beauty and strength that lies within our delicate existence, the ability to be endlessly fragile without actually breaking.



Rebecca Painting

Her visions inspire a feeling of comfort that within even the scariest emotions there is beauty. By looking at the world through Rebecca's eyes we discover something about ourselves. She unlocks the promised land we all dream of, where isolation is serene, heartbreak is empowering and fear is motivation.

She describes the process of creating art as "a bit like having a child" First she gives birth to the ideas, "I collect objects and images that may lead to other ideas. I love the concept that objects retain a history of being owned, found, grown etc, this gives spirit to things I find, a past, a significance."

Next, "is the, adolescent stage, where the work almost rebels against me, this is challenging. It requires patience and knowing when to walk away."

Finally, "the work takes shape and evolves into an entity of its own, we are connected but it is its own identity" When it is hung on a wall and admired, the journey does not end, instead a legacy full of future revelations emerges for Rebecca and for all those who witness it.

Rebecca's mantra for life is, "the greatest thing we can do with our lives is to inspire others to greatness," and her artworks do just that, their reflective ability evokes a desire to somehow capture all that is intangible and manifest it outwards in our own material way.

Her own artistic manifestations began to come to light at fifteen with a commission to illustrate three stationary ranges for John Sands. She then went onto finish a degree at Sydney College of the Arts and set up her own experimental gallery in an old church building in York St. This was followed by trips to LA and New York, London, Mexico, Amsterdam and Egypt, not to mention Japan, which has a clear presence in her art. "I draw a lot of inspiration from their fabrics, tattoos, architecture and design." There is no end to Rebecca's artistic journey, the same way there is no end to the elements that consistently motivate it.

Rebecca's artistic style, which she describes as, "eclectic" seeps into every facet of her life. Oriental art, French Chic, naturalism and pop, unite into one individualised aesthetic. "Art plays a large role in the way I decorate and dress."

For Rebecca, "fashion is a practical public way to communicate on a visual level. Fashion is heavily inspired by art and artists and visa versa, think the Bauhaus school, Fluxus, (art movement in the 60's "to flow") Surrealism, Punk, Minimalism." The list goes on. One of Rebecca's first collections was inspired by the creative identity of MARNI, "the colours and textures of the famous fashion brand, evoked something in me that I wanted to explore in a different medium."

Rebecca's awareness of her surroundings and her ability to absorb their every detail becomes even more profound when she talks about her childhood. Every memory has a scent, a texture and a soundtrack that emerges as a visual feeling.

As a baby wrapped up in her favourite blanky and being wheeled about the fields of the families 1920 style country house in Bowral NSW, she watched the

seasons change and these fragments of memories, along with photos, have become a constant resource for the nature in her art works.

"art is more than a hobby, it's a passion, an entire language."

Next she hit the big city, "you could ride your BMX in the streets in your undies as a kid till just after dark!" She fondly discusses memories of, "BBQ's, hot summer nights on the veranda with cups of ice and the

sound and smell of petrol and freshly mowed grass on Saturday mornings."

Attending her first school, she kept her pencils in recycled coloured contact covered food tins, those pencils have now become prized possessions which warrant more than that modest storage, but for Rebecca this simplistic memory is part of the magic.

The suburbs didn't last though; her parents followed their dreams to the Blue Mountains. "Spending my teens in the Mountains was isolated but allowed my imagination to develop without the distractions of the city. I became very close to nature and a lot of my work

## GALLERY

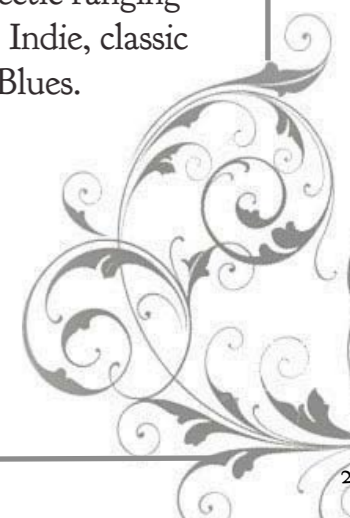
- ❖ The pre-Raphaelites, because I'm a romantic
- ❖ Gustav Klimt: his divinity
- ❖ Egon Sheila his tortured freedom of stroke
- ❖ Gloria and Rosemary Petyare " the medicine leaves"

## SOUNDTRACK

My taste in music is eclectic ranging from Classical, Ethnic, Indie, classic Rock and roll, Jazz and Blues.

Favourites include:

- ❖ The Shins,
- ❖ Tori Amos,
- ❖ PJ Harvey,
- ❖ Nick Drake,
- ❖ Radio Head.



is inspired by my observations from this lifestyle." From a young age, Rebecca was encouraged to nurture her creative side.

She has always made her own entertainment, "my sister and I would hold performances, often incorporating pets and neighbours kids, dressing up, singing and dancing, making sets and costumes."

These memories are hers, but they evoke nostalgia within us all for the time when our spirits were, for the most part, untouched by reality and it's daily pressures. Through Rebecca's art works the imagination of a child lives on amongst the acknowledged vulnerability of adulthood.

Her ability to soak up the often forgotten elements of the simpler things in life has turned into an entire artistic style that is intrinsically hers, but communally understood and appreciated. Hours still pass by as Rebecca envelops me in her effervescent creativity. The buzz of Oxford St. is non-existent all that I hear and feel is propelled by Rebecca's artwork. In it's presence the world seems silently picturesque, honest and eternally magical.

Four hours at Rebecca's enforces the realisation that life, like art, is an eyes wide open exercise and if we don't train our bodies to do it then we will never create or be art ourselves. Ω

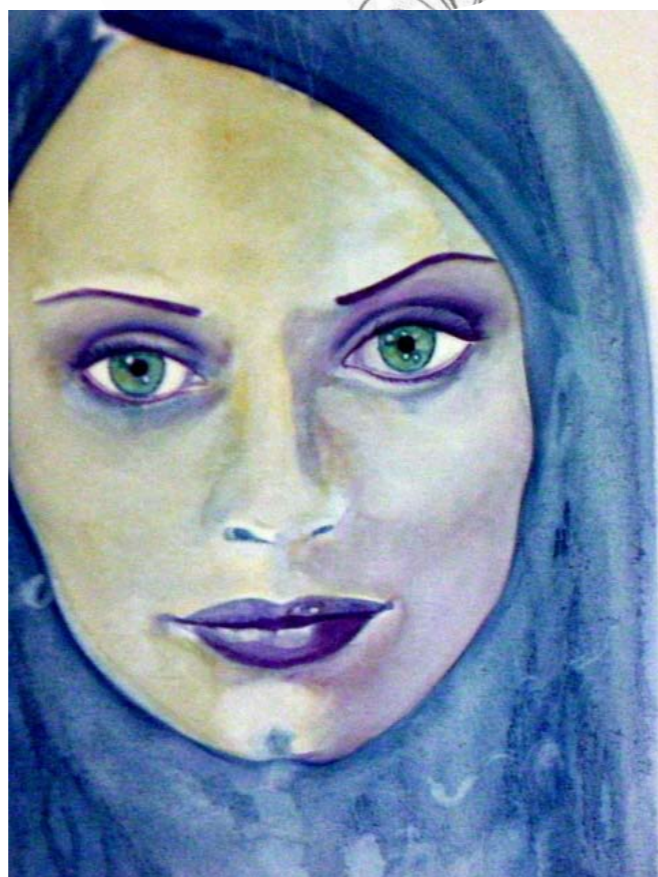


"My favourite artwork is a series of small works, little landscapes they are simple and significant because my late Grandfather loved them and was fascinated by them, they are ethereal and humble."

## MOVIE REEL

I grew up with old classics.

Alfred Hitchcock, "La Belle et la Bete" (Beauty and the Beast) by Jean Cocteau. Quentin Tarantino and Sophia Coppola (Virgin Suicides and Marie Antoinette). "Pillow Book" inspired a whole wave of paintings, an influence that I am still deriving sources from.



A Self Portrait by Rebecca

Le Fashion



# Layer up wrap up stay warm

WINTER IS ALL ABOUT THE LAYERS. KNIT ONE, SILK ONE, KNIT ONE, PEARL ONE, STOCKING ONE, SOCK TWO, KNIT ONE. LAYERING IS AN ART AND LIKE ALL ART IT TAKES A MASTER TO CREATE A WORK OF ART. IT IS ALL ABOUT KNOWING THE

DIFFERENCE BETWEEN TOO MUCH AND NOT ENOUGH.

Photography- Carlos Velasco, Styling and Words- Rhiannon Bulley, Model- Melise Williams from Chic

Dress, Stripe Cardigan and Black cardigan worn underneath Kirrily Johnston  
White Cardigan by- Verducci-Smith  
Socks, legwarmers and gloves all stylists own  
Shoes models own



## Le secret revealed

Wear one pattern with layers of plain

Wear one bright colour and one monotone

Wear gloves, a scarf and boots all in the same tone

Wear a hood or a hat that matches your colour scheme

Keep the thick layers monotone and wear one statement piece

Keep the accessories to a minimum. Your layers are making the statement

Let your layers drape. Don't walk the tight rope.

Don't be afraid to wear socks and stockings together but make them stand apart from each other

Wool is one of the best and easiest things to layer, make your layers count, make them thick and strong not thin and pointless

Comfort is chic when you are comfortable you are warm.



# New Style the New Zealand Way

NEW ZEALAND MAY BE A SMALL ISLAND, BUT IT HAS A BIG PERSONALITY ESPECIALLY WHEN IT COMES TO STYLE. THREE OF NEW ZEALAND'S FRESHEST DESIGNERS SHARE THEIR LIFE-STYLE WITH US, FROM THEIR RUNWAYS TO THEIR WORKROOM'S AND ALL THEIR FAVOURITE SPOTS IN BETWEEN.

New Zealand's physical landscapes have been considered the reason to visit this island home for a long time, but fashion is quickly becoming the latest form of visual stimulus that is putting it on the map.

The rolling mountains, thick forests and beautiful beaches are still an integral part of its charm though and of the inspiration of the designers who have made their home amongst them. Their style emerges as a costume drama that is equally as captivating as it's sets. Fortified fairies and grungy woodland creatures emerge from the forests and modest mermaids sporting bright flowing silks surface on the golden sandy beaches, while sculpted columns of suiting meld with the urban environments in between. New Zealanders are one savvy cast of creative dressers and inspired designers, who walk hand in hand in their cultural appreciation, for sport, food, wine, art and beautiful scenery, from the harbour to the hills.

Le Magazine was given an exclusive tour around it all by three of New Zealand's most prevalent young fashion faces.

## Jimmy D

James Dobson of the label, Jimmy D, who is "drawn to contrasts", certainly has no problem finding them in his surroundings. Even the trendy Auckland Street, Karangahape Road, (which is fondly referred to by locals as K Road,) where his studio and store are located, is

"There is a whole culture of brooding artists, gothic architecture and dark, intellectual, film and music that has permeated into our fashion."

full of them, from its stylish galleries and café's to adult stores. Of this particular contrast James says, "It's a vibrant and exciting place to work!" No doubt.

This contrast translates into his designs, which are a hybrid of diaphanous silks and luxurious sporting fabrics. In his world body con and voluminous silhouettes go head to head and both come out on top.

He describes his label's aesthetic as, "dark with a sense of humour, I like designing pieces that people can give their own spin, I don't like the idea of little Jimmy D clones roaming the streets." And by the sounds of things that isn't a worry since as James puts it New Zealanders "generally aren't too slavish to trends. We are far enough removed from the fashion epicenters to have developed our own unique style. We value practicality in our clothes, generally we are not fussy or 'blingy.'" With all those beautiful landscapes to play in, it's no wonder; there



Jimmy D Aw10

is simply no time for fashion to slow down the New Zealander's active lifestyle.

The other side of the culture, which is more creatively active, is equally as ingrained in New Zealand style. "There is a whole culture of brooding artists, gothic architecture and dark, intellectual, film and music that has permeated into our fashion." Jimmy D is the label that sits somewhere in between, constantly working with the inspiration of both groups to create a harmonious style.

So what does this New Zealander recommend if we too want to get a taste of both worlds? He spends most of his time on the animated fore mentioned st. where he works. He loves to "grab a drink at D.O.C, or if we're feeling flush Coco Cantina, which always seems to swell into a three course meal with many glasses of New Zealand wine." For a more subdued daytime beverage

he recommends Allelujah café, "where the coffee is always nice and strong."

Another must, is a trip to his shop, Children of Vision, where you can purchase his own label as well as handpicked designers from London and Paris. This winter you will find all kinds of goodies adorned with his own swing tags. At the moment he is "very much into layering," so we can expect, "drippy oversized

### ADDRESS BOOK

#### Children of Vision

Shop 16

St. Kevin's Arcade  
179 - 183 Karangahape road  
Auckland 1010  
New Zealand  
Phone: +64 9 379 8930

#### Coco's Cantina

376-378 K RD (next to Kamo)

PH 09 300 7582

#### D.O.C

352 Karangahape Road,  
Newton, Auckland,

(09) 365 1800

Lyllal Beach



merino layers, scarves, skinny pants, wool cardigans and work boots." Sounds like a striking new contrast.

Outside of his own little street Jame's likes to escape to "Wellington to see the galleries, and to eat my way around its many amazing restaurants or Waiheke island is a great way to recharge. And last year I did a three week road trip down to Christchurch, seeing some beautiful scenery along the way."

There certainly seems to be no shortage of visual and digestive pass times for this particular New Zealand local, which present more than their fair share of contrasting inspiration.

### What are three reasons we should visit NZ?

Fashion, Food and Fun people. It's a beautiful country, full of inspiring and creative people, and great coffee!

## Alexandra Owen

Alexandra Owen is one of New Zealand's brightest stars, having already conquered her hometown, this AW10 she set her sites on New York. A far cry from the old warehouse in Wellington, where a cutting table and some remnants of fabric from Rembrandt suits gave birth to the routes of her label. Today her label is steeped in the same aesthetics, with collections comprised of feminine suiting with strong sculptural elements.

Alexandra Owen has become a recognisable look on the New Zealand fashion scene, catering to the individuality of the New Zealand woman. Alexandra describes this woman as, 'cerebral and feminine,' and both her and the land that surrounds her are intrinsically linked to New Zealand design. "It's one of those old sayings- you can't separate the people from the land. New Zealand people and design are very grounded, thoughtful, undiluted, and at its best truly unique."

So, if the style of it's people can be described in those words and additionally, "fearless and gritty," then their

Near Lake Ida

Children of Vision

One of James favourite Beaches





Alexandra Owen

land must certainly hold some strong characteristics of it's own. Alexandra certainly seems to think so; she absorbs it as part of her routine everyday. Each morning she is awoken by the sound of the sea in her Wellington home that looks out over Lyall Bay and every afternoon she makes sure she gets lost in the endless rolling hills for half an hour before retiring to one of Wellington's famous restaurants. Her recommendations are, "The Ambeli, Matterhorn, Logan Brown and the Capitol, which is her favourite place to celebrate. She also likes to wonder around Wellington Harbour and people watch at the Deluxe Café and if she isn't sitting here taking in the world then she can usually be found in her garden, where she sits ("not gardening") for hours on end. Another venue she sites as not to be missed is the Peter McLeavey Gallery, "for the man and the art."

Alexandra is also a big fan of Queenstown, she describes it as, "just beautiful!" And with her seemingly picturesque choices of pastime so far it's worth a bet that she isn't exaggerating.

This land does certainly sound thoughtful, fearless and undiluted in its endless nature and possibility and you can certainly see these qualities, especially its purity and distinctiveness, in Alexandra's designs. Her AW10 collection materializes these elements with the quality materials that New Zealand is renowned for, think, "lots of oversized shawls and collared cashmere jackets and if you are feeling decadent they also come in New Zealand

lamb's leather." New Zealand's land not only provides unique inspiration for the designers but also the unique materials to create it.

### ADDRESS BOOK-

#### The Ambeli

www.theambeli.co.nz

18 Majoribanks Street  
Mount Victoria 6011, Wellington,  
New Zealand  
(04) 385 7577

#### Capitol

10 Kent Terrace Mt Victoria 6011

Wellington,  
New Zealand  
(04) 384 2855

#### Matterhorn

www.matterhorn.co.nz

106 Cuba Street  
Te Aro 6011, Wellington, New Zealand  
(04) 384 3359

#### Peter Macleavy Gallery

Address: 147 Cuba Street, Wellington

Phone number: +64 4 384 7356

K Road, Auckland



Adrian Haliwood

Adrian describes his label as "new wave fashion," and it revolves around exactly that, the waves at the New Zealand beaches where Adrian spends most of his spare time.

Adrian, is yet another Auckland designer who hails from K Road. He gets his morning coffees from Santos, which are apparently also strong. It seems the fashion set in New Zealand love a strong coffee as much the French and Italians.

After the coffee fix Adrian heads to his workroom where his bold prints take on a 3D life, "I tend to work on traditional shapes adding my own twist."

His designs are for the contemporary New Zealander who is fearless when it comes to colour and pattern. He epitomises elegance with an edge, classic with a new age cool and chic with a touch of harder chick.

**"I tend to work on traditional shapes adding my own twist."**

His label is the ultimate retort to the notion that New Zealand style is quite androgynous and dark, "there is a lot said about it (New Zealand style) being dark and moody but I feel it's just a few labels, which are in the press who tend to do the Belgian thing." He believes the fact that they are an island nation tucked away from everywhere else allows them to have their own identity.

This freedom is also ingrained in his own inspirational process he is open to, "everything and anything," in the same way his audience is. For AW10 this inspiration took the form of a, "David Hockney painting, "A BIGGER SPLASH," the range has a lot of bold colour and draped pieces. Think L.A poolside, silk turbans, modern dressing with a 70's retro edge." Like he said he adds his own twist.

Adrian is quick to say that his environment doesn't influence his designs " it's just the place I choose to base myself," but one has to wonder if his morning swims at the local beach pools, really had nothing to do with it.

Water is Adrian's biggest attraction in New Zealand, his weekends are spent at the local beaches and his favourite holiday get away is a small beach down in the Hakes-bay called Waimarama, "It's an amazing spot. A good friend has an amazing family home there set back up from the beach, lots of crayfish, great vineyards, white sandy beach and not many people." Sounds like heaven.

### ADDRESS BOOK

#### SantosCafe,

130 Quay St, Auckland

#### Waimarama

Head to <http://www.travelpod.com/hotel-deals/NewZealand/WaimaramaHawkesBay.html>

For more information on accommodation and getting there

### What are three reasons we should visit New Zealand?

If you're an outdoors person then the islands of New Zealand are the perfect place for you to holiday, we are completely surrounded by some of the best beaches and native forests in the world, if you like a wee tippie then we have vineyards galore, and you can always get a great steak for the barbie.

It seems the essential ingredients to the New Zealand style recipe are, fearlessness, integrity, innovation, a good strong coffee, a beautiful beach and an endless appetite for human creativity and natural beauty. Dorothy once famously said as she tapped her little red shoes together, "there is no place like home," and these three inspired designers certainly seem to agree.

What is your favourite thing about living in New Zealand?

Space, cleanliness of environment and the land.

## Adrian Haliwood

Adrian Haliwood and the New Zealand fashion scene stumbled upon each other on an advertisement set, " I worked in film and had to make a few tees up for an ad, people working on set wanted some and it snow balled from there."

Waimarana beach



**"It's one of those old sayings- you can't separate the people from the land."**

# Lip Trip

Make up tips By Yvette Elias,  
Styling Tips By Rhiannon Bulley

It's All about Lips, lips Lips A focus on the sexiest part of the face. A fresh clean face with bold lips is a hot statement and looks absolutely sensational. It's the trend of the moment; bold, brighter, and even neon lips. They are fun and reflect individuality and self-expression. Pick your characteristic colour and simply follow these easy steps to create your own enviable lip look.



## Which Queen are you Red or White?

### Red Queen

Dramatic red lips are the new focal point of the face so make sure your outfit doesn't distract from this.

### Wear:

Strong Dark Colours Steer clear of white.

Extreme shapes whether it is a form sculpting bandage dress, a high binding mini or bell shaped skirt and puff sleeve blouse, The shapes need to be the statement feature of the clothing

Keep your accessories simple think the classic pair of pearls or a bold cuff. Make sure your earrings don't over power either.

#### HOW TO APPLY:

Line and fill in your lips with a pencil then with a lip brush apply the lipstick from the centre of your lips to the outer edges.

A vibrant, flushed cheek and smoky eyes are also essential this season and really compliment bold lip colours

For maximum intensity go either matte or ultra-glossy for a high-impact & shine.

Matte Lipstick: Dense, rich, non-shiny and lasts longer. Contains less moisture so they adhere to the lips and don't fade as quickly. Avoid matte lipstick if your lips are dry or chapped.

### White Queen

These striking shades call attention to your every little pout, smile, lick and frown.

These sultry smackers are not for the faint hearted so vamp it up

### Wear:

Stark tones especially blacks and rich purples or pure white.

Make your silhouette as smooth as your lips keep the texture to a minimum

Team it with a pair of a dark stockings and statement high heels

Keep your accessories strong but simple think collar necklaces not long necklaces, cuffs not bangles, large studs not drop earrings. Hint: Dark stones compliment the look nicely.

## Very Hollywood by Michael Kors,

Subtly seductive, demurely dramatic from morning to night, she walks with the classic elegance and starlet glamour of a gardenia in full bloom. She is an oxymoron, a collision of sensibility and sensuality.



## Prada Tendre



She is a double entendre, a story with different beginnings and no ending at all. Each of her charismatic elements intertwines and divides constantly keeping us on our toes. The sharpness of citrus, the strength of sandalwood, the softness of jasmine, she changes from one minute to the next. She is addictively alluring.

# Earthly Beings Become Heavenly Scent.

Words By Rhiannon Bulley

HER SCENT WEAVES ACROSS TABLES AND DANCE FLOORS AND OUT INTO THE COLD NIGHT AIR, FILLING IT WITH HER ELUSIVE PRESENCE. PASSERS BY STOP, ENTHRALLED AND A GAME OF CATCH ME IF YOU CAN BEGINS. FLORAL, MUSK, WOOD, ALL THAT IS NATURALLY BEAUTIFUL AND WILDLY COMPELLING BECOMES REVERED, THEIR CHARACTERISTICS MIRRORING OUR OWN IRREPRESSIBILITY.

## Chloe Eau de Parfum Intense,

She is naturally enchanting, meandering amongst the dense woods filled with cedar wood and amber and emerging into the rolling fields of velvety magnolias and lilies of the valley. Fresh rose garden's beckon and the journey is complete. She lives in a secret world of her own where beauty knows no end, it continuously grows, becoming wilder and more passionate with each bursting note of difference.



## YSL Parisenne,

She is outwardly charming, classic yet coy. She is the essence of the art of savoir-faire, she knows just what to do to make an impact. She dazzles from dawn till dusk and dusk till dawn again. She is devilishly divine. She is fearless in all pursuits. She is intimidating in all her empowered beauty.



## Alberta Ferretti by Alberta Ferretti,

She is dark and ethereal. She sweeps into a room, her nonchalance trails behind her on a breeze of amber scented beauty that weaves a captivating tale into the air. She is no fool for love, she is sure and asserted. He has been waiting she always keeps people waiting. Hanging on baited breath waiting to breathe her in. She is irresistible and she knows it.



# J'adore mon Trench Coat

## Trench Coat NAVY AND WHITE



Erdem

Burberry Prorsum



Dries Van Norton



Aquascutum



Nicole Farhi



Issa



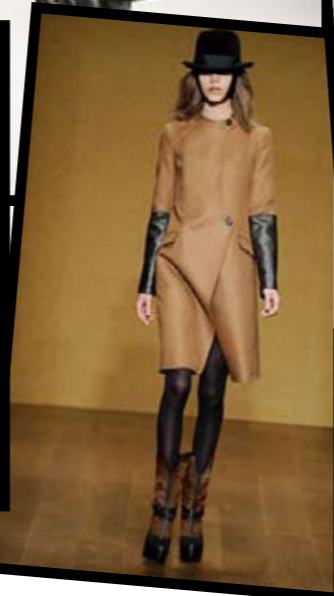
Alexander McQueen



Basso & Brooke



Vanessa Bruno



Nathen Jenden



Balmain



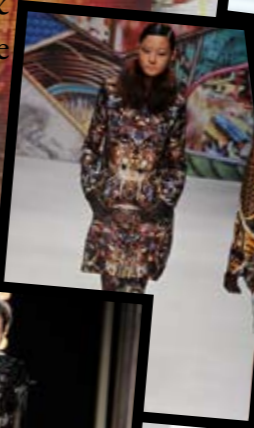
Balenciaga



Diane Vonfurstenberg



Three as Four



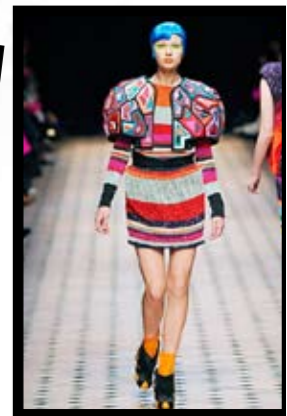
Sophia Kokosalaki



Erdem



Lanvin



Manish Arora

# Hot in the city

WHAT ORIGINALLY BEGAN AS ALL PURPOSE WEAR FOR THE HARSH CONDITIONS OF THE WORLD WAR ONE TRENCHES HAS NOW BECOME A WARDROBE STAPLE. THIS SEASON THE EVER-POPULAR CAMEL NUMBERS ARE BACK AND BETTER THAN EVER IN ARRAY OF UNIQUE FABRICS INCLUDING LEATHER. BLACK IS THE TRADITIONAL ELEGANT NUMBER PERFECT FOR THOSE COOL EVENING EVENTS. KHAKI, NAVY AND WHITE ALSO MAKE NICE ALTERNATIVES. THE TRENCH IS ONE WINTER ESSENTIAL THAT YOU WILL NEVER GET TOO TIRED OF OR HAVE TOO MANY OF.

- Do
- Wear it tied to the left
- Replace the traditional belt with your own leather number
- Go lightly on the other accessories.
- Don't
- Be afraid to try an alternate fabric
- Try to dress them up to much, they speak for themselves
- Tie it in a bow the knot is the traditional manner

- Do
- Minimise your accessories
- Wear a pair of killer heels and sheer black or nude stockings
- Layer it up, textural overload is a must this winter, just make sure your colours hold together what your patterns and techniques don't
- Don't
- Be afraid to take your texture for a test drive during the day
- Try to dress it down with flats
- Go overboard on the make up, pick one part of your face and let it do the talking whether it is a smokey eye or red lip, other than that let your outfit take centre stage.

WHOEVER SAID WINTER WEAR HAD TO BE DULL WAS SERIOUSLY DELUDED THE AW10 RUNWAYS DELIVERED A CASCADE OF TEXTURAL FANTASIES. FROM BEADING TO FOLDING AND TUCKING AND SEQUINING TO BRILLIANT EMBROIDERY THERE WAS NO SHORTAGE OF ARTWORKS TO ADORN YOURSELF IN. SO DON'T BE AFRAID TO WEAR AN ARMOUR OF TEXTURE THAT IS SURE TO KEEP THE BODY WARM AND THE EYES WIDE OPEN.

# Textural Healing